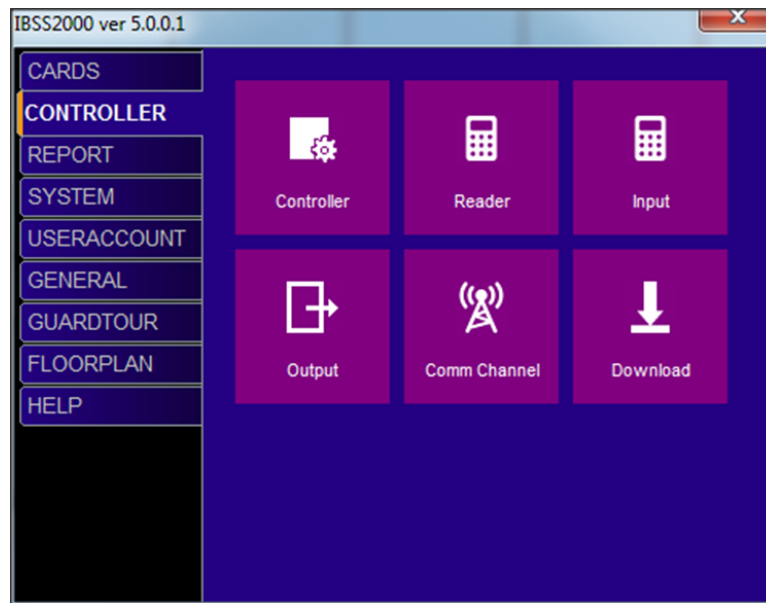


Add and Configure Controller in IBSS2000

Overview

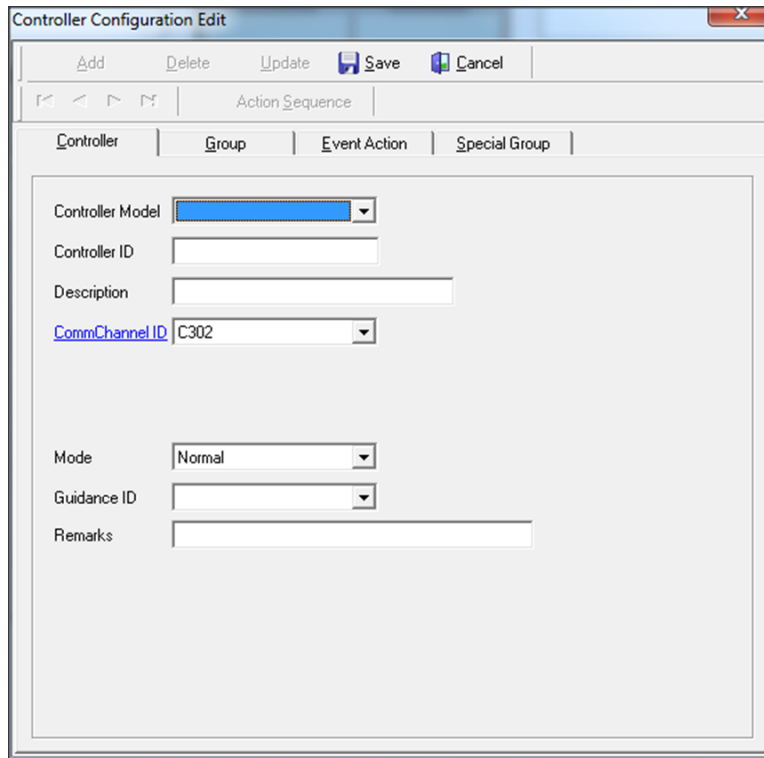
In IBSS2000

Controller Tab click on Controller tile.



Add new Controller by entering following info in the table.

Controller Model	Select the controller Model you want to add
Controller ID	6 char ID to identify this controller.
Description	Can be blank
CommChannel ID	Select the commchannel created for this controller
Mode	Select the Normal for operation, isolate to stop communication
Guidance ID	Can be blank
Remarks	Can be blank



Not all models appear in Controller Model as 8 byte features is off by default.

The save configuration need to be enable on the Commserver software before any configuration can be established. The process to enable communication is thru Commserver software. At Commserver click on Communication, Click Close Commchannel. Then click on Communication again, then click Initialize Commchannel.

