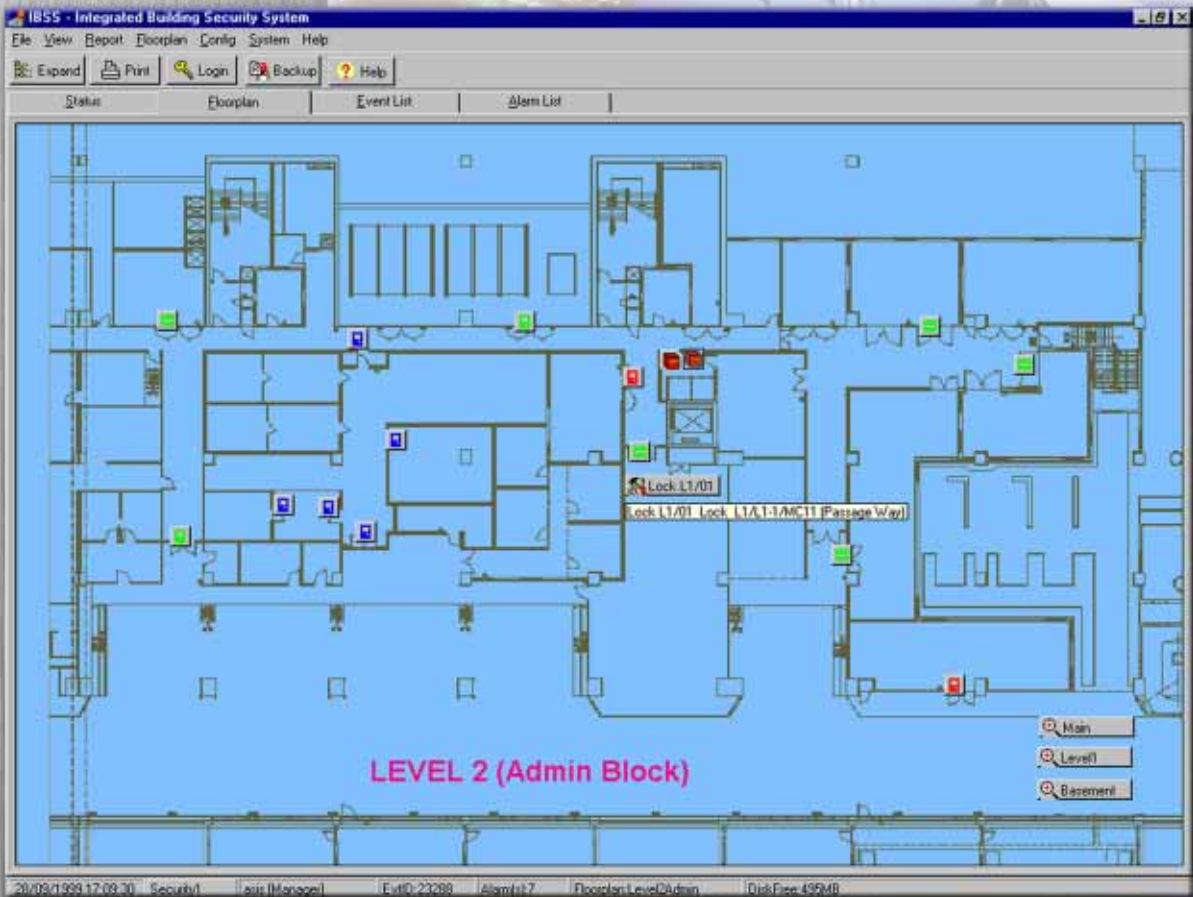


# IBSS 2000 Integrated Building Security System Manager



## Key Features

- Highly scalable system based on Windows 95/98/NT, true client-server architecture and LAN/WAN connectivity using TCP/IP
- Graphical Floorplan Display allows unlimited numbers of floorplans and zoom levels recognising 13 industry standard formats including digital photography
- Advanced Alarm Management with alarm list displays all currently outstanding alarms sorted chronologically or by priority
- Action Sequence (macros) can be user configurable to enable global cross-subsystem device triggering
- Access Levels & Database Partitioning for unlimited control of user command and data access
- Reporting & Data Import/Export with built-in user configurable report generator
- Industry Graded Database Engine built-in for true client-server architecture with industrial standard SQL RDBMS server
- Wide Array of System Integration Options includes CCTV, Intercom, PA System, Building Automation & Fire Alarm System. The list is growing...
- Full year 2000 compliance ensure your investment is protected through the next century



ISO 9001:2000 REGISTERED FIRM  
DNV Certification B.V., THE NETHERLANDS  
Certificate No: RSEA-QSC-1395

**ASIS** technologies

[www.asis-technologies.com](http://www.asis-technologies.com)

### File Server (Min Requirements)

- Pentium III 450MHz Server PC
- 128MB RAM
- 4GB HDD, 3 1/2" FDD
- 14" SVGA monitor
- Network Card (NE2000 compatible) 10/100 BaseT
- Windows NT Server V4.0 or higher

### Workstation (Min Requirements)

- Pentium III 450MHz PC
- 64MB RAM
- 3GB HDD 3 1/2" FDD
- 14" SVGA monitor
- Network Card (NE2000 compatible) 10/100 BaseT
- PCL746+(4 ports RS232/RS422/RS485)
- Windows 95/Windows NT Workstation V4.0

### Comm Server

- Comm Server: 1(Expandable to 4) per System
- Comm Ports: 4 (Expandable to 8 RS232/422/485) each Communication Server
- Cabling: 1 pair 1.0mm diameter twisted screened cable (RS485)
- Topology: Multidrop(Looping)
- Distance: 1200m to the last controller

### System

- Database: Interbase SQL Server for Windows 95/NT
- Network: Ethernet (10BaseT, 10Base2/5, 100BaseT)
- Sub-system: RS232, RS422/485 interface, Ethernet
- Remote Connection: RAS service via modem, WAN
- Fault Tolerant: Disk mirroring(RAID1), RAID5, UPS monitoring
- Max workstation: 255

- User Interface: Windows 95 Graphical User Interface
- Floorplans: BMP, PCX, WMF, JPG, PNG, TIF, Unlimited Plans & Zoom Levels
- Action Sequence: Event/Timer source from Device of any Controller can trigger Device of another Controller. Internal preprogrammed Functions or external executables
- User Password: Unlimited accounts, Unlimited levels, Security Area controls (DB Partitioning)
- User tracking: Audit trial
- Guidance Text: 2000 character memo field
- Printer Support: Serial/Centronics interface Laser, InkJet or Dot Matrix(on-line) printer
- Reporting: User Configurable Report Generator "Report Format" and "Report Qualifier" Templates. Special facilities for Event & Audit Print
- Data Import/Export: User Configurable Templates to import or export data via ODBC, SQL or ASCII Text files.

### Sub-System Support Intrusion

- SFP64 with 64 supervised input points and 64 relay output points
- Remote Arm/Disarm by timezone
- Any input point group can be programmed to trigger any relay output point group
- Max 4096 input & 4096 output per system

### Access Control

- CAC controls up to 8 Card Readers per controller
- Support magnetic stripe, weigand, proximity, Contact/Contactless Smartcard reader technologies
- 5000 cardholder, 2000 events (Max 40000)
- 255 Access Groups & 64 Weekly schedules
- Max 2048 readers per system

### Lift Control

- 1 CAC per lift car
- Dry contact relay up to 64 storeys per Controller

### Time Attendance

- Import data from access control system
- Export text/database file with clocking events from any reader for time attendance report or third party payroll S/W

### Public Address System

- PC emulating paging console
- Automatic Digital Message announcement
- Amplifier & Speaker line monitoring

### Intercom

- Call activity and fault status monitoring
- Cross triggering to CCTV switcher

### CCTV

- Control CCTV Matrix Switcher with/without Alarm
- Control CCTV Multiplexer
- Live video on PC screen with recording/playback
- User Pan/Tilt/Zoom buttons graphics on floorplans

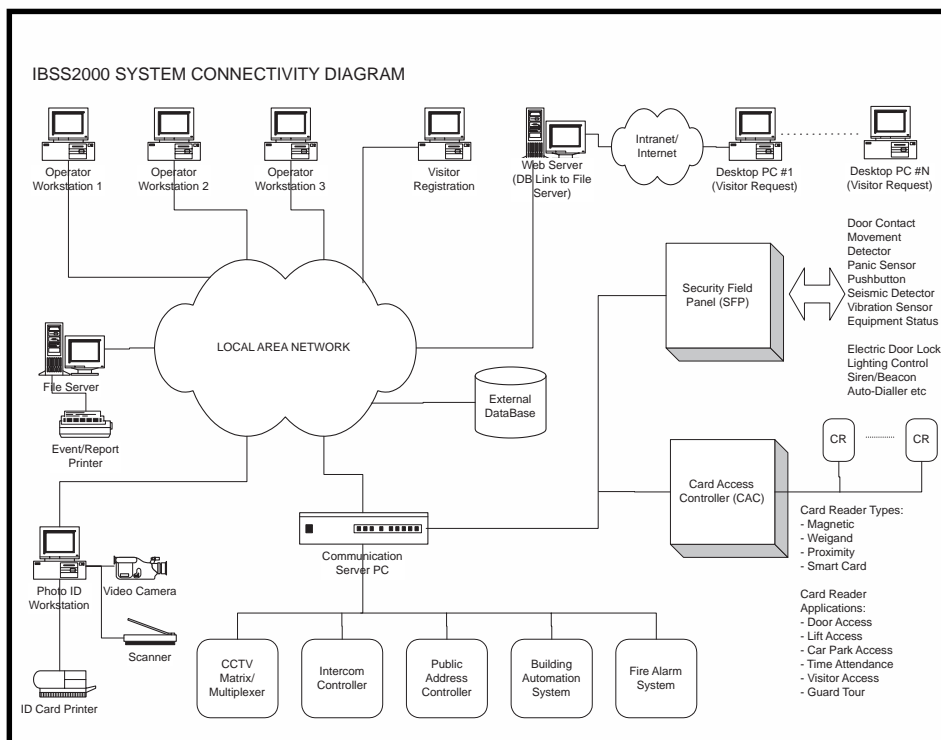
### Photo ID System

- Input Live video, TWAIN scanner or bitmap graphics
- Full formatting, key encoding and printing of cards

### Visitor Management System

- Visitor Request via networked PC or Internet/Intranet
- Limited access and card expiry by visitor

# IBSS 2000 Integrated Building Security System Manager



### Ordering Information

- **IBSS2000-01S** IBSS2000 software first Workstation for up to 2 Field Controllers
- **IBSS2000-01W** IBSS2000 software additional Workstation for up to 2 Field Controllers
- **IBSS2000-03S** IBSS2000 software first Workstation for 3 to 7 Field Controllers
- **IBSS2000-03W** IBSS2000 software additional Workstation 3 to 7 Field Controllers
- **IBSS2000-07S** IBSS2000 software first Workstation for 8 to 11 Field Controllers
- **IBSS2000-07W** IBSS2000 software additional Workstation 8 to 11 Field Controllers
- **IBSS2000-123S** IBSS2000 software first Workstation for 12 to 19 Field Controllers
- **IBSS2000-123W** IBSS2000 software additional Workstation 12 to 19 Field Controllers
- **IBSS2000-203S** IBSS2000 software first Workstation for 20 to 39 Field Controllers
- **IBSS2000-20W** IBSS2000 software additional Workstation 20 to 39 Field Controllers
- **IBSS2000-PH** IBSS2000 PhotoID Module
- **IBSS2000-VMS** IBSS2000 Visitor Management System
- **IBSS2000-CT** IBSS2000 CCTV Switcher/ Multiplexer control

Specifications subject to change without notice.

ibss/ver3.00/0202



**ASIS technologies**  
www.asis-technologies.com